



Further Reference

scrollandscreen.com/biblicalmapping

Biblical Studies and Technological Tools Blog
This PowerPoint
Mapping Programs Features Spreadsheet
Links, Listings, and Further Information

Overview

1. Types of Maps
 - What kind of map do I need?
2. Mapping Matters
 - How will I use the map?
 - What makes for a good map?
3. Digital Mapping Resources
 - What resources can I use?
4. Conclusions / Recommendations

1: Types of Maps


- A. Satellite and Orthophoto
- B. Physical
- C. Political
- D. Relief: Shaded and Raised
- E. Road
- F. Topographic
- G. Illustrations

Reference: www.maptown.com/referencemaptypes.html

1: Types of Maps

A: Satellite and Orthophoto Maps

- ▶ Provide detail in true position
- ▶ BUT no satellite images from ancient times!
- ▶ Can be enhanced: layer tinting

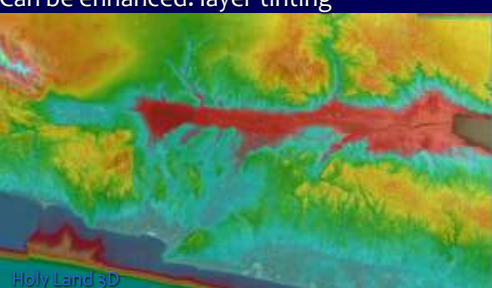


www.creativeview.co.uk/crblog/the-bible-according-to-google-earth/

1: Types of Maps

A: Satellite and Orthophoto Maps

- ▶ Provide detail in true position
- ▶ BUT no satellite images from ancient times!
- ▶ Can be enhanced: layer tinting



Holy Land 3D

1: Types of Maps

B: Physical Maps

- ▶ Mainly used for landforms and bodies of water
- ▶ Provide helpful base terrain



Bible Atlas Online by Access Foundation

1: Types of Maps

C: Political Maps

- ▶ Used to show boundaries of political entities
- ▶ Highlight key historical shifts

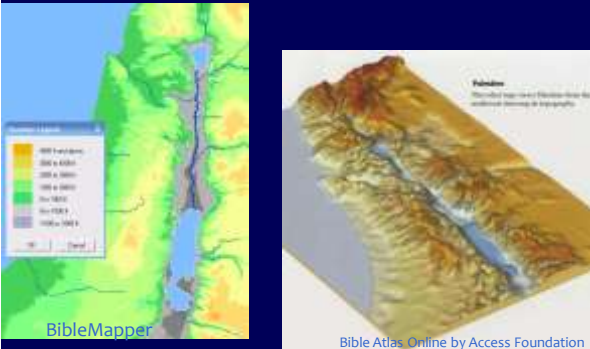


BibleAtlas Online by Access Foundation

1: Types of Maps

D: Relief Maps : Shaded and Raised

- ▶ Provide sense of the land



BibleMapper

Bible Atlas Online by Access Foundation

1: Types of Maps

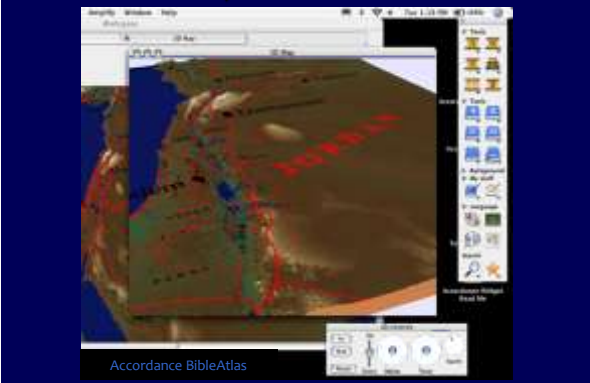
D: Relief Maps : Shaded and Raised



BibleWorks Map Module - Elevation Overlay

1: Types of Maps

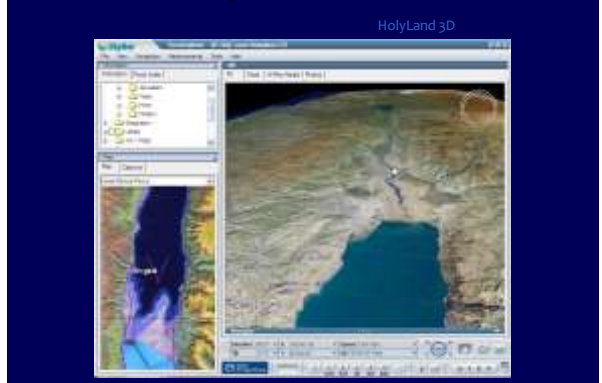
D: Relief Maps : Shaded and Raised



Accordance BibleAtlas

1: Types of Maps

D: Relief Maps : Shaded and Raised



HolyLand 3D

1: Types of Maps

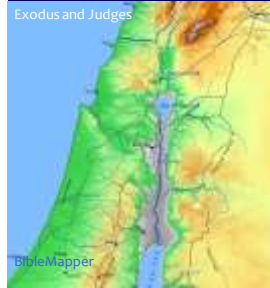
D: Relief Maps : Shaded and Raised



1: Types of Maps

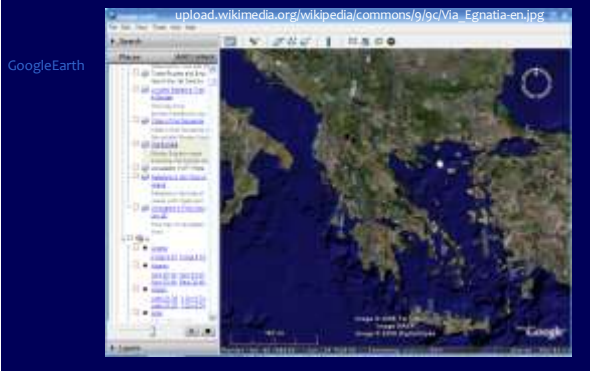
E: Road Maps

- ▶ Help explain historical developments
- ▶ Adjustable to period



1: Types of Maps

E: Road Maps



1: Types of Maps

F: Topographic Maps

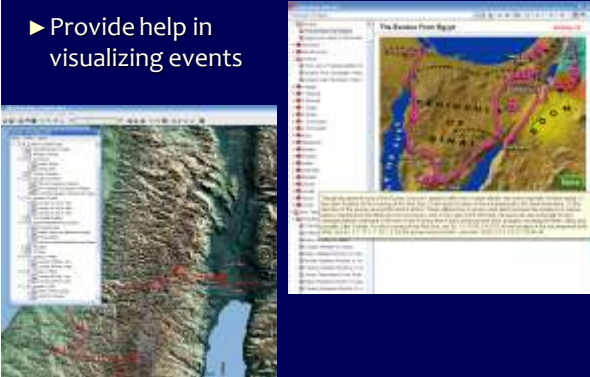
- ▶ Use contour lines



1: Types of Maps

G: Illustrations

- ▶ Provide help in visualizing events



1: Types of Maps

G: Illustrations

Accordance Bible Atlas



2: Mapping Matters

- A. Copyright and Fair Use Considerations
- B. Orientation: N/S or E/W
- C. Accuracy, bias, coverage, appropriateness
- D. Linked to modern locations
- E. Edit-ability (i.e., mapping, not just maps)
- F. Quality
- G. Using Maps

2: Mapping Matters

A: Copyright and Fair Use Considerations

- ▶ Copyright and Fair Use (see web links)
- ▶ Section 107 of US Copyright Act contains a list of the various purposes for which the reproduction of a particular work may be considered “fair,” such as criticism, comment, news reporting, teaching, scholarship, and research. Four factors:
 1. purpose and character of the use, including whether such use is of commercial nature or is for nonprofit educational purposes;
 2. nature of the copyrighted work;
 3. amount and substantiality of the portion used in relation to the copyrighted work as a whole; and
 4. effect of the use upon the potential market for or value of the copyrighted work.

<http://www.copyright.gov/fls/fl102.html>

2: Mapping Matters

A: Copyright and Fair Use Considerations

- ▶ Basically okay if:
 - Used for education or non-profit
 - Not selling or diminishing value to owner
 - Not making a permanent copy

2: Mapping Matters

A: Copyright and Fair Use Considerations

- ▶ Programs and Permissions
 - BibleMapper – no restrictions, even for commercial distribution, with credit given
 - GoogleEarth – maps not for commercial distribution (?)
 - World Wind – Open source earth viewer
 - Creative Commons licenses (creativecommons.org)

2: Mapping Matters

B: Orientation

- ▶ East / West
or
North /
South



2: Mapping Matters

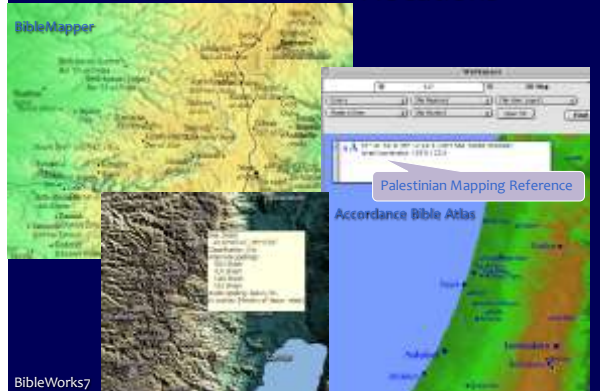
C: Accuracy, Bias, etc.

- ▶ Accuracy
 - Jericho (OT or NT?)
 - Troy / Troas
- ▶ Archaeology
 - Ai (?)
 - Beersheba
- ▶ Tradition
 - Mount of Beatitudes / Mount of Transfiguration
 - Golgotha and Jesus' Tomb (Holy Sepulchre, Garden Tomb, or Talpiot?!)
 - Route of Exodus



2: Mapping Matters

D: Links to modern locations



2: Mapping Matters

E: Edit-ability

- ▶ How much do you want to have maps ready-made, or do you want to be able to edit them?
- ▶ Programs with editable/manipulable maps
 - BibleWorks7/8
 - Accordance Bible Atlas
 - BibleMapper
 - HolyLand 3D
 - GoogleEarth
 - Logos Bible Atlas '99

2: Mapping Matters

F: Quality

What makes a good map?

- ▶ Usage
 - Handout, Projection, Website
 - Consider colors, backgrounds, sizing, copyrights

2: Mapping Matters

F: Quality



2: Mapping Matters

F: Quality

What makes a good map?

- ▶ Clarity
 - Sites appropriate to period or purpose (BW, Acc., BibleMpr)
 - Appropriate background
 - Display compliments purpose



F: Quality (or lack of)

The Resurrection of Jesus and Subsequent Events



F: Quality

Sample from forthcoming Logos Map / Atlas

Thanks to Vince Setterholm

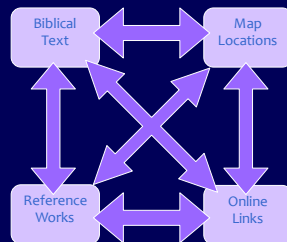


F: Quality

What makes a good map?

► Interactivity

- Ideally, links between Bible text / Map(s) / Reference Works / Online resources
- Maximizing technology: 3D, animations, flyovers, links to pictures/videos



3D Holy Land



GoogleEarth



GoogleEarth



2: Mapping Matters

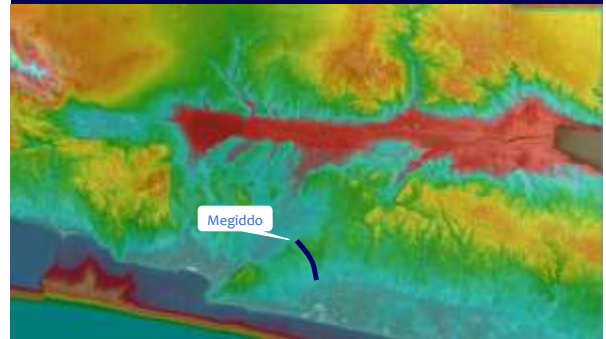
G: Using Maps

- ▶ Overview and Perspective
- ▶ Illustration
 - Biblical Events
 - History and Geography
 - ▶ Gerasa by Stephen Langfur
(www.netours.com/jrs/2003/Gerasa2-12.html)

2: Mapping Matters

G: Using Maps

Holy Land 3D



3: Digital Mapping Resources

- ▶ Maps > Cf. online site for links
- ▶ Mapping Programs

3: Digital Mapping Resources

BibleMapper 3



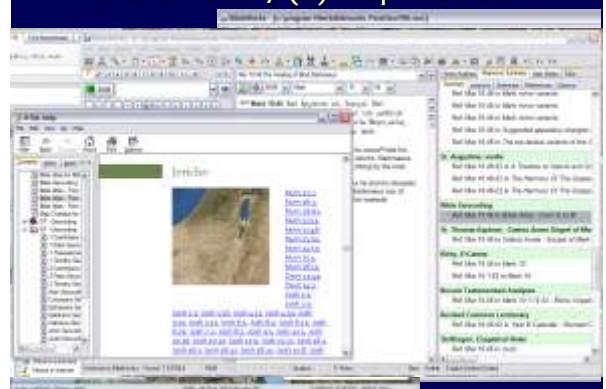
3: Digital Mapping Resources

Accordance Bible Atlas



3: Digital Mapping Resources

BibleWorks 7 (8) Map Module



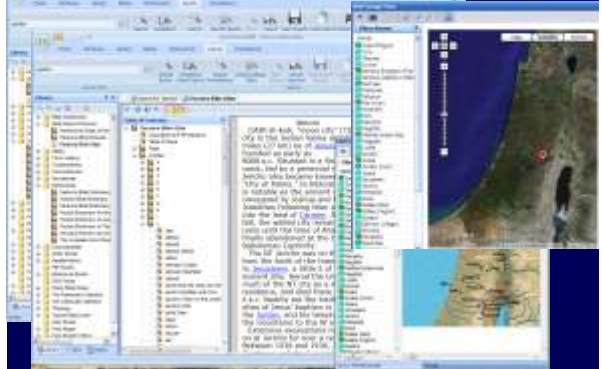
3: Digital Mapping Resources

Logos 3



3: Digital Mapping Resources

Parsons Bible Atlas in QuickVerse 2009



3: Digital Mapping Resources

BibleMap.org



3: Digital Mapping Resources

Interactive Satellite Map of the Holy Land



3: Digital Mapping Resources

Manna Bible Maps



Manna Bible Maps also used in Laridian PocketBible

3: Digital Mapping Resources

e-Sword



3: Digital Mapping Resources

NET / neXt Bible



3: Digital Mapping Resources

BibleAtlas.org



Conclusions / Recommendations

No single program does it all

- ▶ Overall: Integration and Features
 - Accordance > HolyLand3D > BW7/8 > BibleAtlas.org
- ▶ Map Creation
 - BibleMapper > Accordance > BW7/8
- ▶ Interactivity
 - HolyLand3D / GoogleEarth > Accordance
- ▶ Free Mapping Resources
 - GoogleEarth, BibleAtlas.org, NET/neXt Bible
- ▶ Maps: depends...

Conclusions / Recommendations

- ▶ The future...
- ▶ GoogleEarth
 - High resolution with 3D data (but with a Terrain layer were available)
 - Navigation, flyovers, elevations
 - Use with overlays and KMZ files (OpenBible.info)
 - Use in conjunction with existing maps
 - Extensive ability to link across the Cloud: reference works, photos, layers
 - Free and able to be linked from Bible texts/software